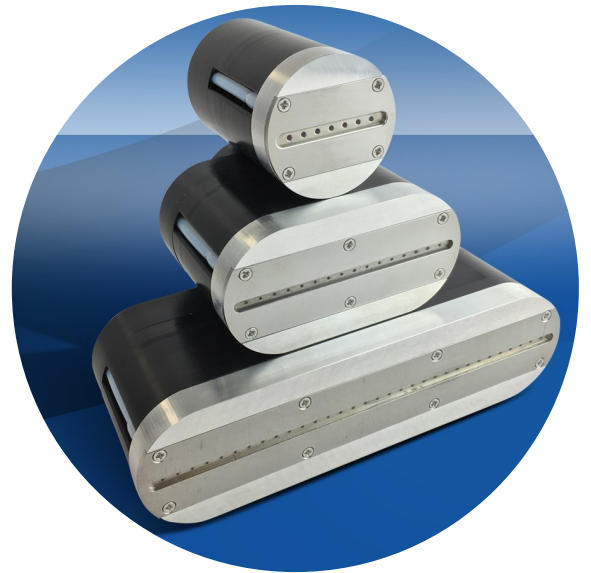
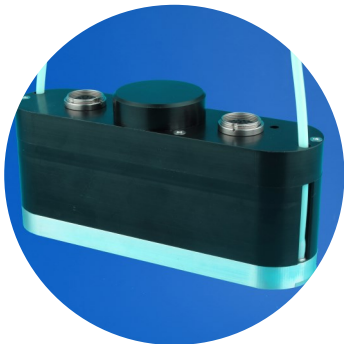
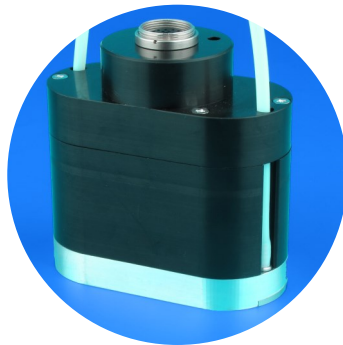
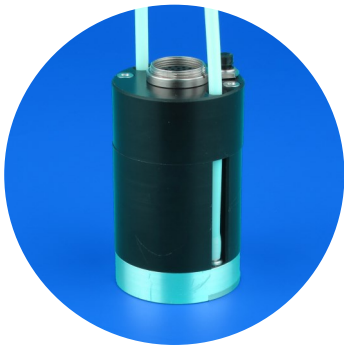




Sellenis
Innovation in Industrial Inkjet Technology

Sellenis new Drop On Demand (DOD) Large Character Printer Series

Connect via TCPIP (internet), USB, Ethernet cable, WIFI, Bluetooth



Sellenis new Drop On Demand (DOD) Large Character Printer Series offers:

Flexibility

- Multiple Languages (can easily add other languages)
- Print text, barcodes, images up to 142.5 mm in height
- Achieve print speeds of up to 300 m/min (600 ft/min)
- Support GS1 data format;
- Full track & trace software
- Use fast drying solvent inks as well as water based ones
- Employ dye and pigment based inks to print on almost any substrates

Ease of Use & Integration

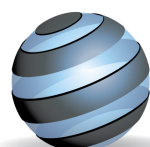
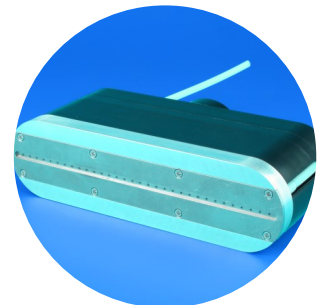
- Connect via TCP/IP (internet), USB, Ethernet cable, WIFI, Bluetooth
- Create, save, edit & print from your PC using Nicelabel, Bartender etc..
- Use Sellenis external protocol to communicate & print from client PC
- A large 10.1" touch screen for ease of operation
- A common graphical user interface across all of our products
- On and off line windows based label creation and printer controller
- Integrate easily with external third party devices
- Intuitive, icon based user interface requiring little or no training
- Automatic or manual printhead flushing (purging)
- Live display of ink used and print data

Robustness

- Rugged, durable printheads
- Perform well in even the harshest of environments (dusty, wet, high temperatures)
- Wide operating environmental and temperature conditions

Widest range of applications

- Print on cartons, sacs of cements, fruits etc..
- Metal and plastics (pipes, windows frames, steel, etc.)
- Timbers & woods
- Concrete



Sellenis
Innovation in Industrial Inkjet Technology

Print Features and Specifications

Function	Specification
Print technology	Drop on Demand (DOD) Valvejet or Large Character Printer (LCP)
Printhead variants	7, 16, 32 valves (1 valve per nozzle)
Nozzle pitch	4.5 mm
Nozzle diameter	80, 130, 180, 270, 350 micrometres
Dot dia	1.5 to 3 mm
Drop ejection speed	Up to 1250 drops per second per nozzle
Print speed	Up to 600 ft/min (5m/s)
Ink compatibility	MEK, Alcohol and Water based inks Dye and pigment based inks
IP rating	Option for IP65
Nozzle removal & replacement	Nozzle plate is removable without any armature or spring popping out even when print head is pointing vertically downward
Ink supply to Printhead	Re-circulating ink for Print head purging and for pigment based colour inks
Print height	7-nozzles: up to 30 mm
	16-nozzles: up to 70.5 mm
	32-nozzles: up to 142.5 mm
Dot size control	Yes
Auto Printhead purge	Yes
Recommended throw distance	16 mm nominal - up to 32 mm
Operating ink supply pressure range	6 to 12 psi
Operating temperature range	5 to 45°C
Valve Jet specific controller functions	Purge Print height (delays provided for slanted heads) Dot size trimming Wake up pulses
Possible system configurations	7, 7+7, 7+16, 16 16+16 32 (two cables connected to same print head)



Sellenis
Innovation in Industrial Inkjet Technology

Ease of Use

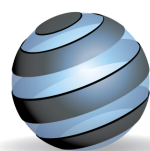
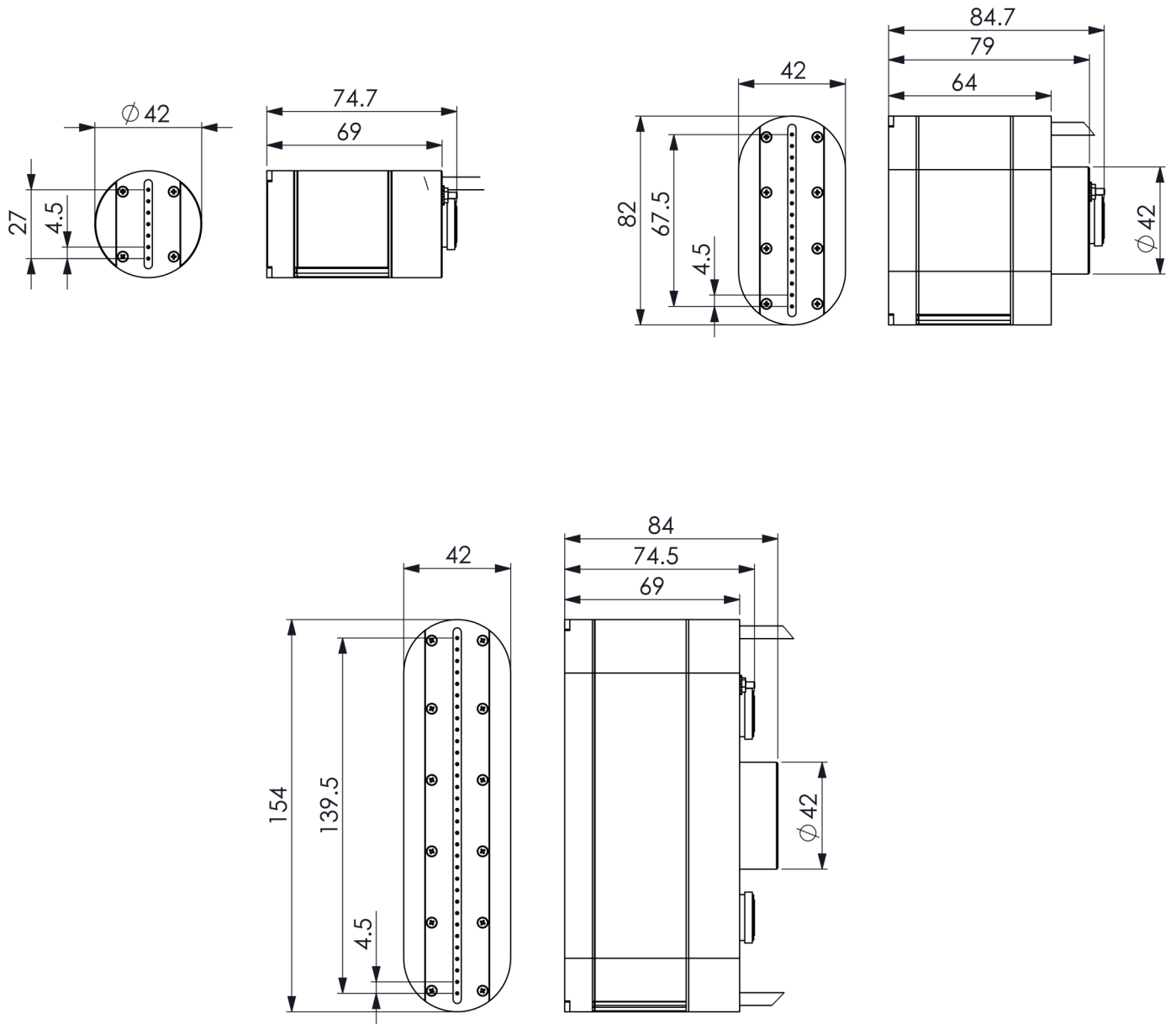
Function	Specification
User interface	10.1" capacitive IPS touch screen
Languages	English, Spanish, Chinese, French, German, Russian, Polish, Turkish, Arabic, Portuguese.. Korean, can easily add any other language
Security	Multiple password levels and user privileges set up for security purposes
Label creation, editing & saving	Easy to use and powerful template design using controller touch screen or offline PC
	Windows Driver allows off line remote label Creation, editing, saving and printing using Nicelabel or Bartender software installed on client PC
Diagnostics	Printer "health" recording, storage, report creation & display
Printer set up and configuration	Icon based Instiutive printer configuration

Ease of Integration

Function	Specification
I/Os	16 off I/O's 2 x PEC; 2 x shaft encoders; 2 x warning lights; 2 x relays; 2 x cameras; 4 printheads USB; Ethernet, Bluetooth
Internet/network connections & communications	Generate labels offline on client PC then print via TCP/IP, Connect via Ethernet cable or WIFI
Remote printing and factory integration	External protocol for controlling, communicating and printing from remote client pc or production management systems such as ERP via Ethernet cable, TCP/IP, WIFI
Windows Printer Driver	To allow networking of printer and ability to communicate and print from windows based software apps
Nicelabel & Bartender	Generates and print templates from powerful label generation software such as Nicelabel & Bartender installed in Sellenis controller or offline in customers PC then use Ethernet cable or wifi to send label to Sellenis' printers to be printed in real time via TCP/IP.
Connections to external serial devices	Connect, receive and print data from external serial devices such as barcode readers, weigh scales, magnetic card readers or any other external serial device using USB or RS232 Use barcode scanner for ease of use, error free data entry to print from offline customer's database
Camera Vision System GS1 Track & Trace	Connect, receive and send commands to camera vision system such as Cognex cameras for use with Read, Print, Verify, Reject and generate report for the purpose of Track and Trace implementation In conjunction with camera vision print from remote customer database unique serial number and full GS1 data barcodes

Inks

Function	Specification
Ink types	The Sellenis range of valvejet are able to use both Solvent (MEK etc...) and SWater based inks.



Sellenis
 Innovation in Industrial Inkjet Technology